

LAND CERTIFICATE NO. 43168 COPY

Land Certificate No. 43168 Tulcea

A. Part I. Property description LAND

within the built-up area

Address: Loc. Tulcea, Str BABADAG, Jud. Tulcea

Item no.	Cadastral number Topographic number	Surface* (sqm)	Observations / References
A1	43168	50,203	Fenced land;

B. Part II. Owners and documents

Entries regarding property rights and other real rights		References
98190 / 27/12/2017		
Normative Act no. 1360, dated 27/10/2001 issued by the GOVERNMENT OF ROMANIA, Annex no. 2 to GD no. 1360/27.10.2001; Administrative Act no. 17844, dated 22/12/2017 issued by the TULCEA MUNICIPALITY; Administrative Act no. 254, dated 28/11/2017 issued by the LOCAL COUNCIL OF TULCEA MUNICIPALITY;		
B1	Provisional registration, right of PROPERTY under art. 41, paragraph 7 from Law no. 7/1996, republished, acquired by law, current share 1/1, initial share 1/1	A1
1) TULCEA MUNICIPALITY, CIF (Fiscal Identification Code): 4321429, public domain		
12027 / 13/02/2019		
Administrative Act no. 2482, dated 08/02/2019 issued by the Municipality of Tulcea;		
B2	Tabulation, PROPERTY right, acquired by law, current share 1/1, initial share 1/1	A1
1) TULCEA MUNICIPALITY, CIF (Fiscal Identification Code): 4321429, public domain		

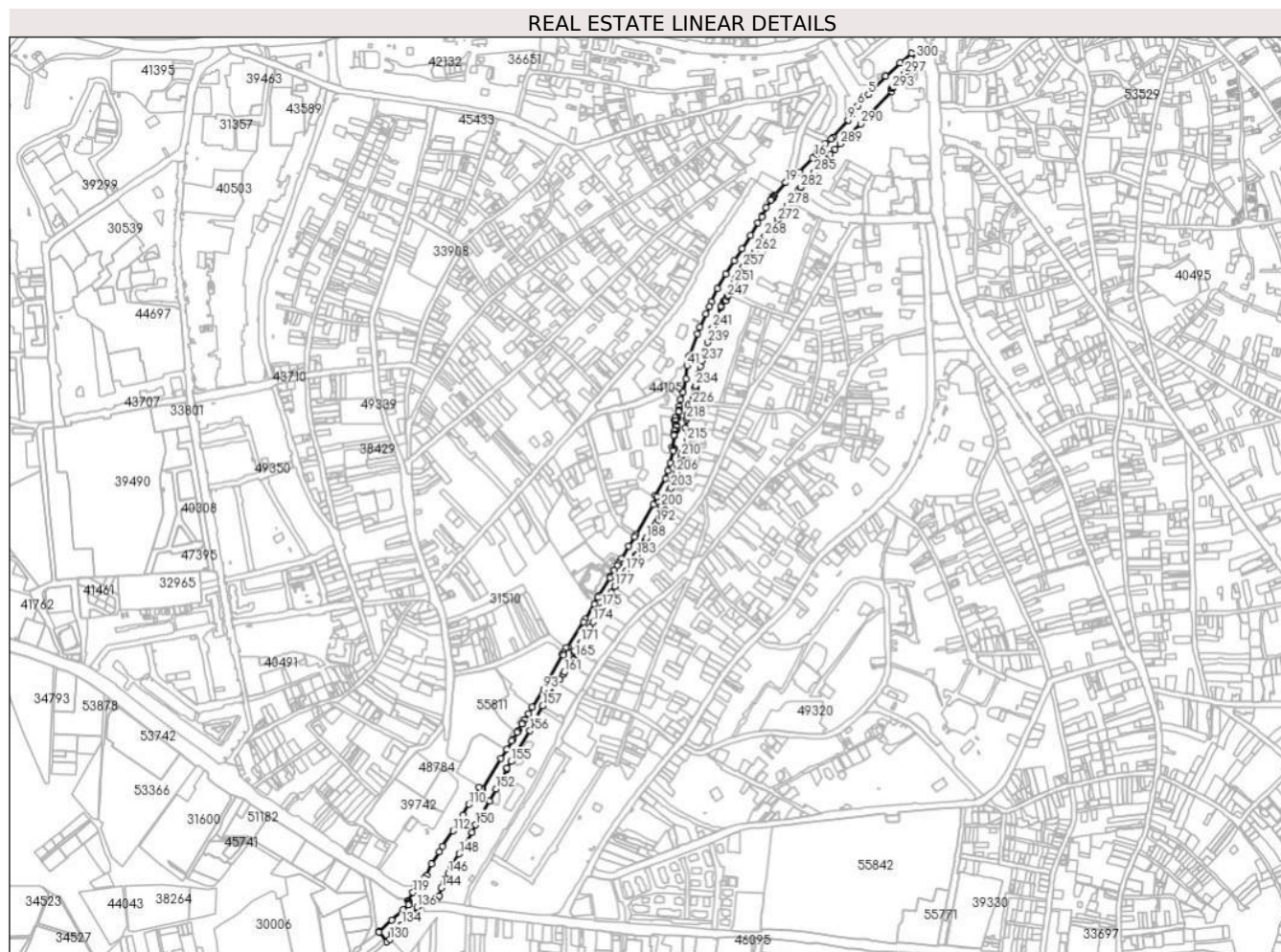
C. Part III. ENCUMBRANCES.

Entries regarding dismemberment of property rights, real rights of guarantee and encumbrances	References
NOT EXISTING	

Land

Cadastral no.	Surface (sqm)*	Observations / References
43168	50,203	

* The surface is determined in the Stereo 70 projection plane.



Land related data

Item no.	Usage category	Land within the built-up area	Surface (sqm)	Strip land	Lot	Topographical no.	Observations / References
1	road	YES	50,203	-	-	-	

Segments length

1) The segment length values are obtained from the plan projection.

Start point	End point	Segment length	Start point	End point	Segment length	Start point	End point	Segment length
1	2	30,049	2	3	39,149	3	4	33,608
4	5	17,195	5	6	31,024	6	7	13,446
7	8	8,929	8	9	12,456	9	10	45,203
10	11	6,028	11	12	15,15	12	13	22,196
13	14	7,956	14	15	3,154	15	16	1.1
16	17	5.06	17	18	38,803	18	19	34,279
19	20	33,779	20	21	3,961	21	22	3,092
22	23	2,993	23	24	1.64	24	25	18,447

Start point	End point	Segment length	Start point	End point	Segment length	Start point	End point	Segment length
25	26	18,564	26	27	1,512	27	28	14,356
28	29	30.06	29	30	31,095	30	31	29,842
31	32	30,937	32	33	33,637	33	34	29,737
34	35	10,491	35	36	15,823	36	37	29,326
37	38	14,315	38	39	47.81	39	40	9,399
40	41	10.74	41	42	25.74	42	43	27.72
43	44	15,557	44	45	13,852	45	46	6,817
46	47	3,453	47	48	0,388	48	49	13,412
49	50	2,092	50	51	2,918	51	52	5,426
52	53	2,558	53	54	7,054	54	55	2,532
55	56	0,561	56	57	2.86	57	58	7,182
58	59	3.49	59	60	0,316	60	61	5,438
61	62	3.47	62	63	1,842	63	64	23,574
64	65	4,442	65	66	2.93	66	67	1,765
67	68	25,686	68	69	16,679	69	70	15,451
70	71	39,534	71	72	4,763	72	73	18,692
73	74	70,058	74	75	4,698	75	76	21,829
76	77	29,206	77	78	11,007	78	79	4,933
79	80	11,559	80	81	13,485	81	82	4,344
82	83	41,999	83	84	3,447	84	85	15,204
85	86	35,212	86	87	7,071	87	88	59,903
88	89	3,825	89	90	11.89	90	91	3.44
91	92	2,295	92	93	79,983	93	94	41,978
94	95	15.03	95	96	15,062	96	97	7.3
97	98	2,562	98	99	14,694	99	100	2,543
100	101	1,492	101	102	16,906	102	103	3,753
103	104	19,899	104	105	21,509	105	106	71.23
106	107	2,619	107	108	4,757	108	109	21,834
109	110	18,583	110	111	24,562	111	112	37,808
112	113	37,869	113	114	12,749	114	115	28.3
115	116	25,022	116	117	8,889	117	118	12,278
118	119	23,453	119	120	19,812	120	121	1,609
121	122	2,551	122	123	2,382	123	124	2,643
124	125	14.79	125	126	30.77	126	127	34,441
127	128	0.82	128	129	25,731	129	130	7,245
130	131	13,548	131	132	1,402	132	133	24.55
133	134	1,924	134	135	29,758	135	136	17,171
136	137	20,918	137	138	0,637	138	139	0,959
139	140	3,623	140	141	12,771	141	142	7,793
142	143	10.89	143	144	15,494	144	145	10,767
145	146	21,827	146	147	12,857	147	148	32,226
148	149	50,357	149	150	16,343	150	151	55,508
151	152	27.61	152	153	45,212	153	154	2,846
154	155	15.0	155	156	72,778	156	157	56,361
157	158	53,798	158	159	10,275	159	160	11,682
160	161	4,317	161	162	17.94	162	163	2,299
163	164	18,219	164	165	1,738	165	166	4,371
166	167	4,422	167	168	5,682	168	169	2,523
169	170	16,554	170	171	4,619	171	172	19,319
172	173	17.61	173	174	10,554	174	175	35,052
175	176	34,917	176	177	14,077	177	178	19,668
178	179	19.5	179	180	18.77	180	181	16,416
181	182	2,569	182	183	2,246	183	184	16,668
184	185	13,139	185	186	1,804	186	187	1,954
187	188	4,975	188	189	14,776	189	190	6,844
190	191	9,813	191	192	6,861	192	193	5.65

Start point	End point	Segment length	Start point	End point	Segment length	Start point	End point	Segment length
193	194	7.17	194	195	4.06	195	196	11,738
196	197	0,864	197	198	1,318	198	199	7,142
199	200	2,356	200	201	19,801	201	202	14,742
202	203	7,684	203	204	11,397	204	205	12,524
205	206	8.55	206	207	14,258	207	208	0,157
208	209	11.5	209	210	7.8	210	211	3,695
211	212	5,512	212	213	1,296	213	214	11.94
214	215	12,613	215	216	17,318	216	217	11,004
217	218	17,048	218	219	4.6	219	220	5,499
220	221	0,664	221	222	9,107	222	223	0,387
223	224	3,852	224	225	6,666	225	226	6,278
226	227	11,778	227	228	2,062	228	229	3,373
229	230	6,039	230	231	2,747	231	232	7,294
232	233	2,612	233	234	5,188	234	235	23,607
235	236	15,547	236	237	12,059	237	238	16,887
238	239	21,738	239	240	28,606	240	241	4,332
241	242	42,813	242	243	2.3	243	244	11,138
244	245	2,301	245	246	1,949	246	247	8,399
247	248	1,346	248	249	1,941	249	250	27,822
250	251	1,495	251	252	9,023	252	253	3,741
253	254	3,998	254	255	13,481	255	256	5,959
256	257	0,365	257	258	17,153	258	259	5,297
259	260	3,519	260	261	2,063	261	262	13,276
262	263	12,076	263	264	9,086	264	265	3,299
265	266	3,306	266	267	2,806	267	268	6.3
268	269	12,088	269	270	3,825	270	271	5,769
271	272	18,644	272	273	3,473	273	274	8,314
274	275	1,096	275	276	8,031	276	277	1,101
277	278	17,015	278	279	12,648	279	280	26,905
280	281	4,871	281	282	0,618	282	283	9,434
283	284	11,411	284	285	20,711	285	286	44,025
286	287	2.87	287	288	14,854	288	289	15,337
289	290	57,049	290	291	90,579	291	292	5,694
292	293	0,994	293	294	2,329	294	295	2,296
295	296	20,535	296	297	14,335	297	298	6,483
298	299	24,656	299	300	7,192	300	1	15,071

** Segment lengths are determined in the Stereo 70 projection plane and are rounded to 1 millimeter.

*** The distance between the points is made up of cumulative segments that are smaller than the value of 1 millimeter.